

Oban, Lorn and the Isles Area Community Planning Action Plan 2017-2020



Introduction

The Community Empowerment (Scotland) Act requires Community Planning Partnerships (CPP) to have focused action plans to reduce inequalities within a community. The use of statistics, your feedback from the Place Standard Consultation held in April 2017 and local partners' knowledge has determined what activity needs to take place (and where) in the next 1 to 3 years.

The plan will be reviewed every 12 months and monitored at quarterly Area Community Planning Group meetings.

The actions contained within this plan do not feature in any other plans and complement ongoing activity from individual organisations. Some of the issues highlighted through the engagement in developing these plans are being addressed in plans such as:

- Health and Social Care Locality Plans
- Economic Development Action Plans
- Individual service plans of organisations
- Health and Wellbeing Network Plans

All partners in the Community Planning Partnership are committed to working together when engaging with the local community. Contact communitydevelopment@argyll-bute.gov.uk for best practice.

What activity is already happening within the Oban, Lorn and the Isles area?

The following activities are happening within the Oban, Lorn and the Isles area.

- Health and Social Care Partnership Locality Plans
- [Local Economic Development Action Plans](#)
- [Tiree Charrette](#) (Our Island, Our Future)
- CHArts

The following activities are being explored in Community Planning's strategic delivery plans:

- Develop a multi-agency solution to the challenges faced by the new Early Years / Childcare regulations (Argyll & Bute Council and Argyll College UHI)
- Actions from the Anti-Poverty strategy which relate to Child Poverty (Health and Social Care Partnership)
- Establish clusters of technology led enterprises at the European Marine Science Park (HIE)
- Promote the educational offering of Oban as a University Town (HIE and Argyll College UHI)
- Delivery of a Community Transport Pilot (Third Sector Interface)

Existing Community Led Action Plans

The CPP is aware of the following Community Led Action Plans within the Oban, Lorn and the Isles area. A Community Led Action Plan is a community-owned and community-led document identifying the needs of a community which sets out actions to address these.

- [Dalavich Improvement Group Community Action Plan](#)
- [Isle of Coll](#)
- Isle of Kerrera Residents Association Community Development Plan
- Isle of Mull – [North and Central Mull](#) and [Ross of Mull and Iona](#) Development Plans
- Oban Communities Trust – The Rockfield Centre
- Lorn Islands Partnership – Lismore, Kerrera and Luing

Focused local area community planning work in 2017-2020

The communities that will be the focus of targeted local community planning partnership work in 2017-2020 are **Oban, Dunbeg, Port Appin** and **Mull, Iona, Coll and Tiree**, with activities on road speed for the communities of **Connel, Kilmelford** and **Taynuilt**. The CPP also recognises that neighbouring communities will benefit from any targeted action. For more information, see page 7.

What actions are Argyll and Bute Community Planning Partnership committing to do in the area?

We have consulted with Area Community Planning Groups and local communities to determine where focused activity should take place and what key themes require action. The actions will help reduce the inequality of outcome experienced by communities living in these areas and will complement the existing strategic activity and community-led action plans already happening within the area.

Oban

Action	Lead Organisation
Identify where small business units could be sited and supply <ul style="list-style-type: none">• European Marine Science Park• Other areas	HIE Argyll & Bute Council
Investigate road transport issues and develop solutions	Argyll & Bute Council
Investigate transition between children and adult disabled services, and set up focus group.	Health and Social Care Partnership
Review and explore parking arrangements within the town	Argyll & Bute Council

Dunbeg

Action	Lead Organisation
Use speed detecting equipment to determine whether speeding cars is an issue for this community	Police Scotland
Upgrade Kirk Road as part of Dunbeg masterplan	Argyll & Bute Council

Port Appin

Action	Lead Organisation
Explore how community transport within Port Appin and Glen Creran could reduce social isolation and assist with health and wellbeing	Community Transport Working Group

Mull, Iona, Coll and Tiree

Action	Lead Organisation
Evaluate out of hours health and social care provision on the islands. This action exists within the Health and Social Care Partnership locality plans.	Health and Social Care Partnership
Promote work of Police on the islands	Police Scotland
Improve the infrastructure at Craignure Harbour	Argyll & Bute Council
Encourage communities to support motorhome, touring caravan and camping facilities and promote marketing around these	Community Councils

Connel

Action	Lead Organisation
Use speed detecting equipment to determine whether speeding cars is an issue for this community	Police Scotland

Kilmelford

Action	Lead Organisation
Use speed detecting equipment to determine whether speeding cars is an issue for this community	Police Scotland

Taynuilt

Action	Lead Organisation
Use speed detecting equipment to determine whether speeding cars is an issue for this community	Police Scotland

Background Information and statistics on why we have chosen these communities

The Scottish Index of Multiple Deprivation 2016 ranked one of the twenty-seven data zones within Oban, Lorn and the Isles as being among the 15% most overall deprived data zones in Scotland. This data zone is within Oban South.

The Improvement Service's Community Planning Outcome Profile tool looks at Intermediate Geography Zones (IGZ) and ranks these against 8 outcomes: Out of Work Benefits, Child Poverty, S4 Tariff Rate, Positive Destinations, Crime Rate, Emergency Admissions, Early Mortality and Depopulation. It is worth stating that the most up to date data within the tool is from 2014 however at that time the IGZ of Oban South was ranked as the sixth area within Argyll and Bute experiencing the poorest outcomes with Oban North ranking as the eighth. It is encouraging that three out of the five IGZ fare better in terms of life outcomes than other similar communities across Scotland and that three out of the five IGZ are in top half of most improved communities within Argyll and Bute.

All Outcomes		Comparison against over similar communities across Scotland		Improvement	
Ranking against all Argyll and Bute Communities (poorest outcome to best) (1-22)	Name of area	Ranking and whether it is faring better or worse than other similar communities	Name of area	Ranking within Argyll and Bute (least improvement to most) (1-22)	Name of area
6	Oban South	9, worse	Loch Awe	3	Loch Awe
8	Oban North	10, worse	Oban North	8	Oban North
17	Loch Awe	18, better	Benderloch Trail	15	Oban South
19	Benderloch Trail	19, better	Oban South	19	Benderloch Trail
22	Mull, Iona, Coll and Tiree	22, better	Mull, Iona, Coll and Tiree	22	Mull, Iona, Coll and Tiree

Source: Improvement Service Community Planning Outcome Profile Tool, June 2017

69 people responded to the Place Standard consultation on Oban, Dunbeg and Connel. The categories where respondents felt there was significant room for improvement were: Traffic and Parking, Housing and Community and Influence and Sense of Control.

In total, 140 people responded from the Oban, Lorn and the Isles area on the communities of Appin, Ardentallen, Arle (Mull), Balvicar, Barcaldine, Benderloch, Bonawe, Bunessan, Clachan Seil, Craginure, Connel, Dalavich, Dervaig (Mull), Dunbeg, Coll, Iona, Lismore, Kilchrenan, Kilmelford, Kilmore, Lochdon (Mull), North Connel, North Ledaig, Oban, Pennyghael, Salen, Taynuilt, Tobermory and Torloisk (Mull).

The CPP will monitor statistics and feedback from community consultations and will assess on an annual basis whether the communities receiving focused action should change.

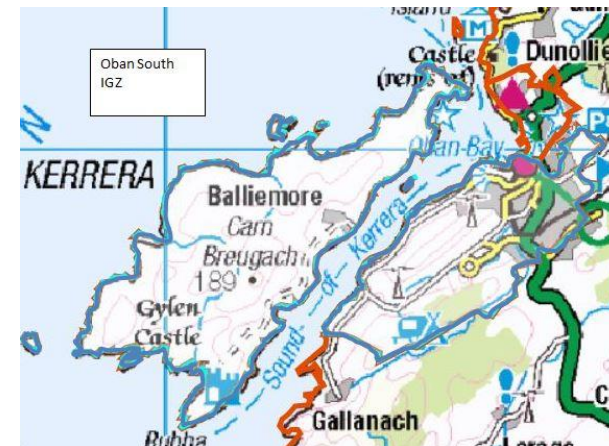
What is an Intermediate Geography Zone and what area does it cover?

The Scottish Government uses data zones to examine small area statistics. The geography of Scotland is dissected into local authority boundaries and a data zone is a small area with a population between 500 and 1000. Intermediate Geography Zones are aggregations of data zones and contain between 2,500 and 6000 people. They were created as there was a need for a statistical level between data zone and local authority area was required as not all statistics are able to be released at data zone level.

There are five Intermediate Geography Zones (IGZ) in the Oban, Lorn and the Isles area: Benderloch Trail, Loch Awe, Mull, Iona, Coll and Tiree, Oban North and Oban South, The naming and boundaries of these zones is determined by the Scottish Government and maps are useful to identify the boundaries.

The statistics used by the Improvement Service to determine the rankings looks at these IGZ however the Community Planning Partnership is aware that focused activity will benefit the wider area.

Maps of the Intermediate Geography Zones



Argyll and Bute Community
Planning Partnership

cppadmin@argyll-bute.gov.uk

01546 604 464





Highlands and Islands Enterprise
Iomairt na Gàidhealtachd 's nan Eilean



University of the
Highlands and Islands
Argyll College

Oilthigh na Gàidhealtachd
agus nan Eilean
Colaiste Earra-Ghàidheil



SCOTTISH
FIRE AND RESCUE SERVICE

Working together for a safer Scotland

